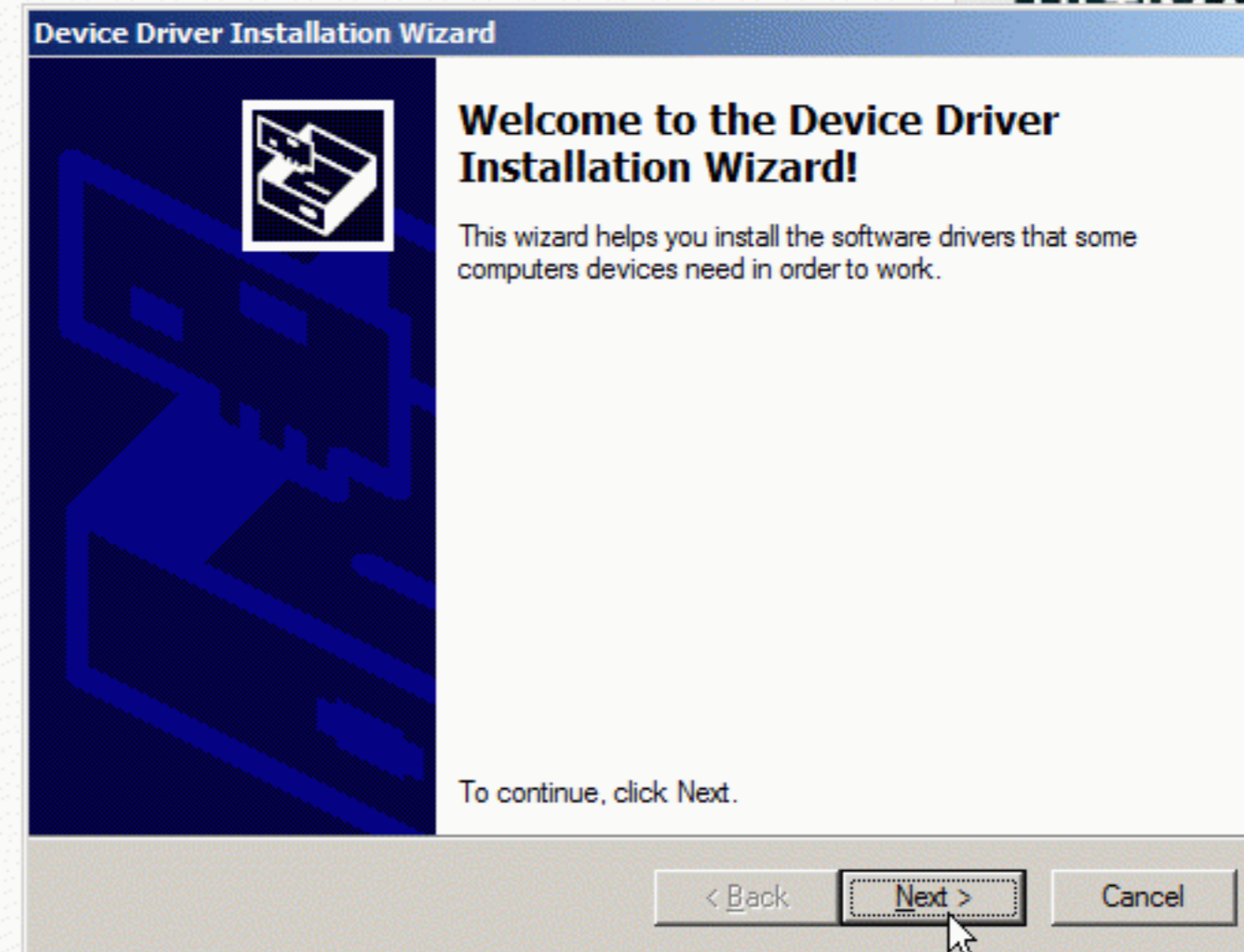


15 seconds ADB Installer v1.4.3

ADB, Fastboot and Drivers

```
Administrator: 15 seconds ADB Installer v1.4.2
#####
#                               #
#           15 seconds ADB Installer           #
#                               #
#           version 1.4.2                   #
#                               #
#           by Snoop05 - Snoop05B@gmail.com   #
#                               #
#           Android Debug Bridge version 1.0.32   #
#           Google USB Driver version 11.0.0000.000000 #
#                               #
#           http://forum.xda-developers.com/showthread.php?t=2588979 #
#                               #
#####
Do you want to install ADB and Fastboot? <Y/N>y
Install ADB system-wide? <Y/N>y
Installing ADB and Fastboot ... <system-wide>
4 file(s) copied.
Do you want to install device drivers? <Y/N>_
```



What is this?

This is All-in-One installer for 3 most **AnGrY DuDe** in early 2013. I saw another for tools and drivers.

Features:

- Small** - 9.18 MB
- Fast** - 15 seconds install (many times)
- AIO** - ADB, Fastboot and also Drivers
- Easy to install** - just run it and program
- Clean** - ADB and Google Drivers from

Install process:

1. Run it (**Require administrator privileges**)
2. Press Y/Yes to install ADB and Fastboot or N/No to skip
3. Press Y/Yes to install ADB system-wide or N/No for current user only
4. Press Y/Yes to install Drivers or N/No to skip

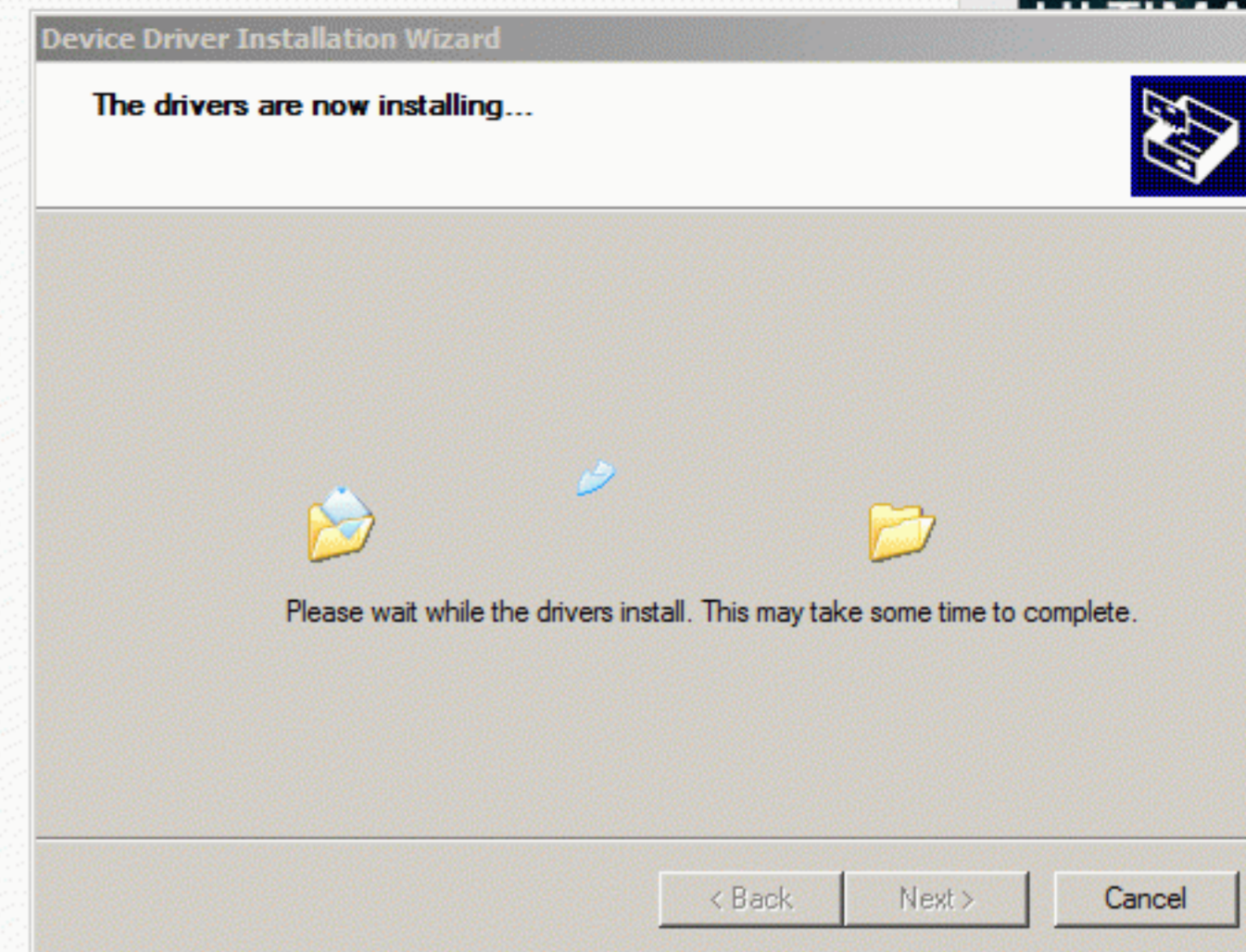
```
Administrator: 15 seconds ADB Installer v1.4.3
#####
#                               #
#           by Snoop05 - Snoop05B@gmail.com   #
#                               #
#           Android Debug Bridge version 1.0.32 (MM) #
#           Google USB Driver version 11.0.0000.00000 #
#                               #
#           http://forum.xda-developers.com/showthread.php?t=2588979 #
#                               #
#####
Do you want to install ADB and Fastboot? (Y/N)y
Install ADB system-wide? (Y/N)y
Installing ADB and Fastboot ... (system-wide)
4 file(s) copied.
SUCCESS: Specified value was saved.
Do you want to install device drivers? (Y/N)y
Installing 64-bit driver ...
Please continue driver installation ...
```

made it for my Kurdish friend
It's very small and fast installer

15 seconds ADB Installer v1.4.3

ADB, Fastboot and Drivers

```
Administrator: 15 seconds ADB Installer v1.4.2
#####
#                               #
#           15 seconds ADB Installer           #
#           version 1.4.2                       #
#           by Snoop05 - Snoop05B@gmail.com      #
#           Android Debug Bridge version 1.0.32  #
#           Google USB Driver version 11.0.0000.00000 #
#           http://forum.xda-developers.com/showthread.php?t=2588979 #
#####
Do you want to install ADB and Fastboot? <Y/N>y
Install ADB system-wide? <Y/N>y
Installing ADB and Fastboot ... <system-wide>
4 file(s) copied.
Do you want to install device drivers? <Y/N>_
```



What is this?

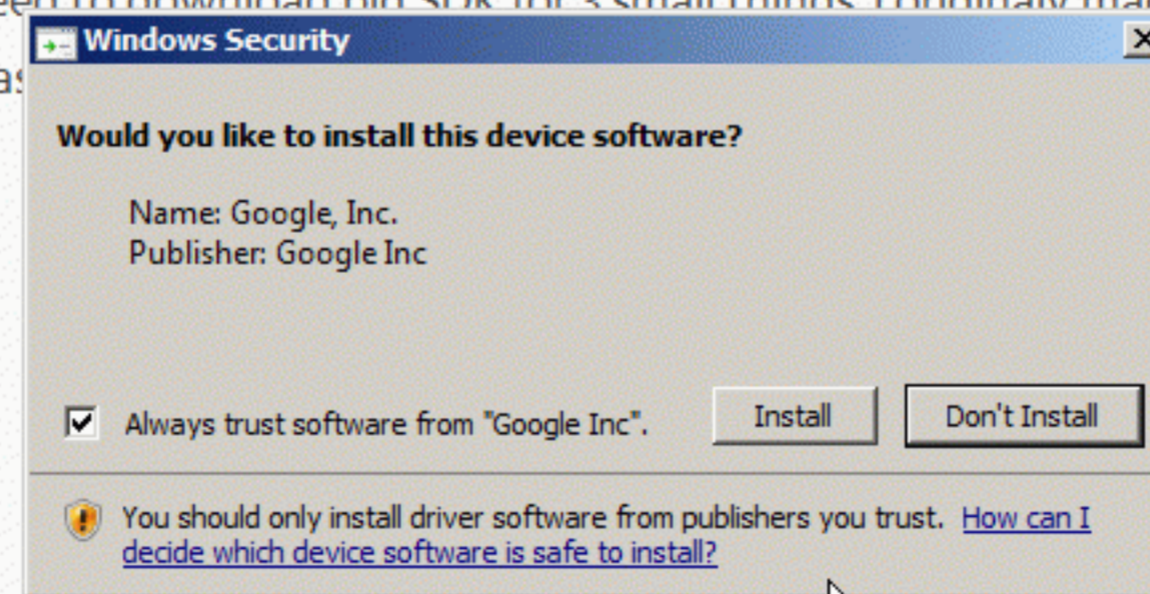
This is All-in-One installer for 3 most needed PC tools for Android. No need to download big SDK for 3 small things. I originally made it for my Kurdish friend AnGrY DuDe in early 2013. I saw another ADB installer on XDA, but it was very big and slow. I made this one very small and fast installer for tools and drivers.

Features:

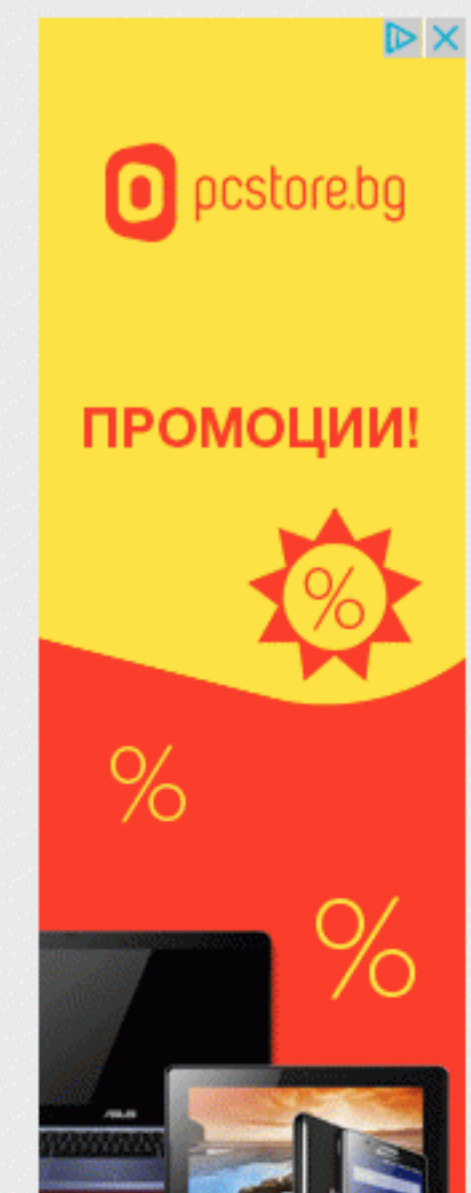
- Small** - 9.18 MB
- Fast** - 15 seconds install (many times its even less)
- AIO** - ADB, Fastboot and also Drivers
- Easy to install** - just run it and program will guide you
- Clean** - ADB and Google Drivers from latest SDK

Install process:

1. Run it (Require administrator privileges)
2. Press Y/Yes to install ADB and Fastboot or N/No to skip
3. Press Y/Yes to install ADB system-wide or N/No for current user only
4. Press Y/Yes to install Drivers or N/No to skip



- RECENT
- diversary What a coincidence that I on this 2 ... 2016-May-19 9:52
 - es, the only user account on the s admin. And ... 2016-May-27 1:30
 - artemen 1 HI, I have trouble installing this or any other distribution of ... 2016-May-26 22:38
 - 1 Hello, My LG G3 D855P is completely dead/bricked after using ... 2016-May-16 20:25
 - Ray1000





Completing the Device Driver Installation Wizard

The drivers were successfully installed on this computer.

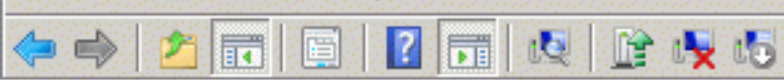
You can now connect your device to this computer. If your device came with instructions, please read them first.

Driver Name	Status
✓ Google, Inc. (WinUSB) ...	Ready to use

< Back

Finish

Cancel



- Server Manager (INTEL)
- Roles
- Features
- Diagnostics
 - Event Viewer
 - Reliability and Performance
 - Device Manager
- Configuration
 - Task Scheduler
 - Windows Firewall with Advz
 - Services
 - WMI Control
 - Local Users and Groups
- Storage

Device Manager

- INTEL
 - Computer
 - Disk drives
 - Display adapters
 - Human Interface Devices
 - IDE ATA/ATAPI controllers
 - IEEE 1394 Bus host controllers
 - Keyboards
 - Mice and other pointing devices
 - Monitors
 - Network adapters
 - Broadcom NetLink (TM) Gigabit Ethernet
 - Shrew Soft Virtual Adapter
 - TAP-Windows Adapter V9 for ZyXEL SecuExtender
 - VirtualBox Host-Only Ethernet Adapter
 - Ports (COM & LPT)
 - Communications Port (COM1)
 - Processors
 - Sound, video and game controllers
 - AMD High Definition Audio Device
 - Realtek High Definition Audio
 - Storage controllers
 - Microsoft iSCSI Initiator
 - System devices
 - ACPI Fixed Feature Button
 - ACPI Sleep Button
 - Direct memory access controller
 - High Definition Audio Controller
 - High Definition Audio Controller
 - High precision event timer
 - Intel(R) 4 Series Chipset PCI Express Root Port - 2E21
 - Intel(R) 4 Series Chipset Processor to I/O Controller - 2E20
 - Intel(R) 82801 PCI Bridge - 244E
 - Intel(R) ICH10 Family PCI Express Root Port 1 - 3A40
 - Intel(R) ICH10 Family PCI Express Root Port 2 - 3A42
 - Intel(R) ICH10 Family PCI Express Root Port 3 - 3A44
 - Intel(R) ICH10 Family PCI Express Root Port 4 - 3A46
 - Intel(R) ICH10 Family PCI Express Root Port 5 - 3A48
 - Intel(R) ICH10 Family PCI Express Root Port 6 - 3A4A
 - Intel(R) ICH10 Family SMBus Controller - 3A30
 - Intel(R) ICH10R LPC Interface Controller - 3A16
 - Microsoft ACPI-Compliant System
 - Microsoft System Management BIOS Driver
 - Numeric data processor
 - PCI bus
 - Plug and Play Software Device Enumerator
 - Programmable interrupt controller
 - System CMOS/real time clock
 - System speaker
 - System timer
 - Terminal Server Device Redirector
 - UMBus Enumerator
 - UMBus Root Bus Enumerator
 - Universal Serial Bus controllers
 - Generic USB Hub

Actions

Device Manager

More Actions

- User Guide
- Meet Android Studio
- Workflow Basics
- Manage Your Project
- Write Your App
- Build and Run Your App
- Configure Your Build
- Debug Your App
- Test Your App
- Profile Your App
- Publish Your App
- Command Line Tools
 - adb
 - bmgr
 - etc1tool
 - jobb
 - logcat
 - mksdcard
 - zipalign
- Release Notes

In some cases, you might need to terminate the adb server process and then restart it to resolve the problem (e.g., if adb does not respond to a command).

To stop the adb server, use the `kill-server` command. You can then restart the server by issuing any other adb command.

Wireless usage

adb is usually used over USB. However, it is also possible to use over Wi-Fi, as described here.

1. Connect your Android device and adb host computer to a common Wi-Fi network accessible to both. We have found that not all access points are suitable; you may need to use an access point whose firewall is configured properly to support adb.

Note: If you are attempting to connect to a Wear device, force it to connect to Wi-Fi by shutting off Bluetooth on the phone connected to it.

2. Connect the device to the host computer with a USB cable.

3. Set the target device to listen for a TCP/IP connection on port 5555.

```
$ adb tcpip 5555
```

4. Disconnect the USB cable from the target device.

5. Find the IP address of the Android device. For example, on a Nexus device, you can find the IP address at **Settings > About tablet (or About phone) > Status > IP address**. Or, on an Android Wear device, you can find the IP address at **Settings > Wi-Fi Settings > Advanced > IP address**.

6. Connect to the device, identifying it by IP address.

```
$ adb connect <device-ip-address>
```

7. Confirm that your host computer is connected to the device.

```
$ adb devices
List of devices attached
<device-ip-address>:5555 device
```

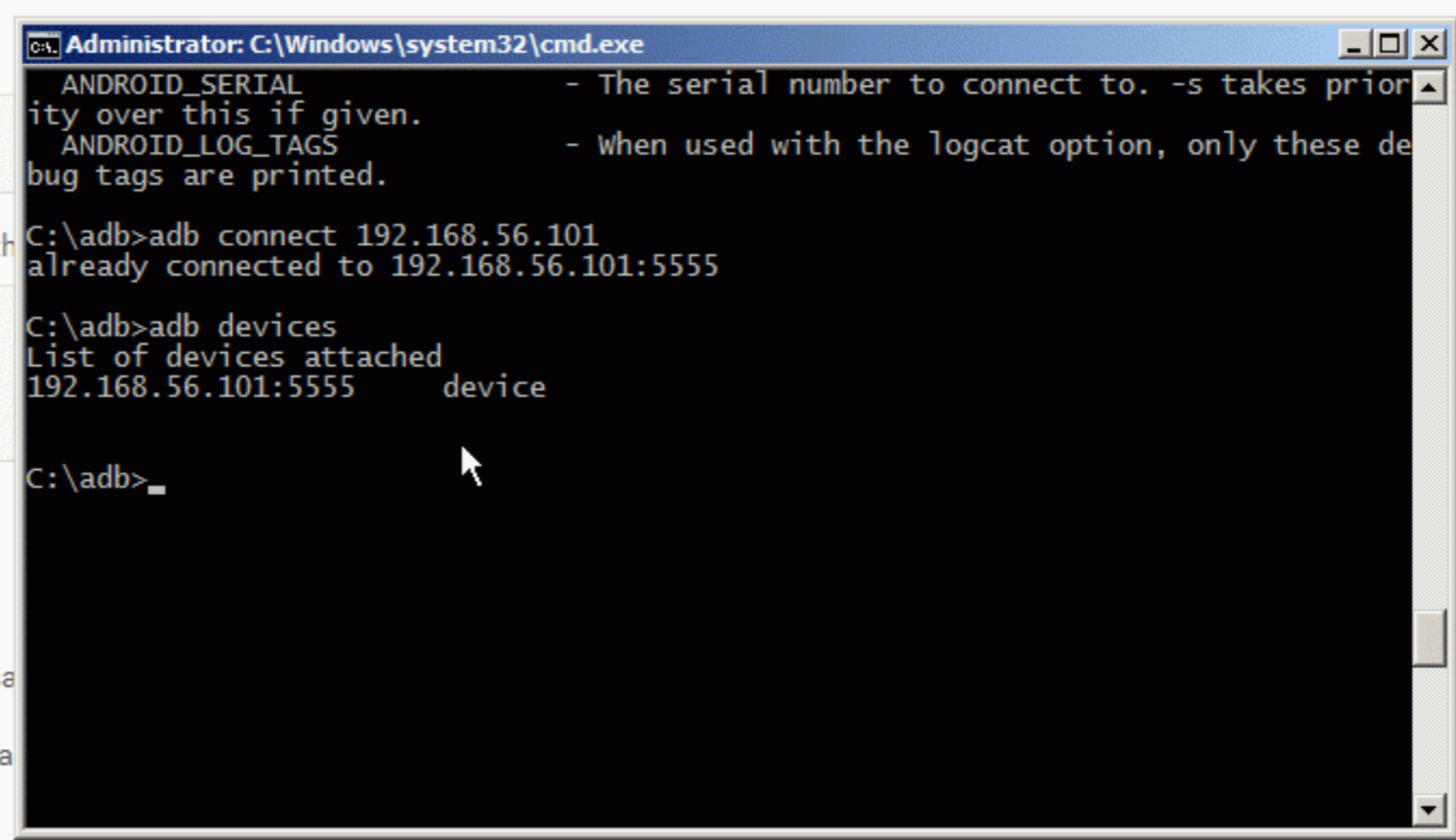
You're now good to go!

If the adb connection is ever lost:

1. Make sure that your host is still connected to the same network.
2. Reconnect by executing the "adb connect" step again.
3. Or if that doesn't work, reset your adb host:

```
adb kill-server
```

and then start over from the beginning.



The Cheese Factory :: Blog

You need to reboot the virtual device now but we don't suggest relaunch it once again since it may leads to some weird behavior you need to reboot the device through command line like this:

```
1 | adb reboot
```

In case you accidentally close the virtual device, don't be panic. times before it can boot up.

Step 2: Install gapps - Before we go on to the next step, you need gapps by your virtual device's Android version:

[Android 5.0.x](#), [Android 4.4.x](#), [Android 4.3.x](#), [Android 4.2.x](#), [Andro](#)

And then drop&drop the downloaded file to a virtual device like process.

```
Administrator: C:\Windows\system32\cmd.exe - adb reboot
ANDROID_SERIAL - The serial number to connect to. -s takes priority over this if given.
ANDROID_LOG_TAGS - When used with the logcat option, only these debug tags are printed.

C:\adb>adb connect 192.168.56.101
already connected to 192.168.56.101:5555

C:\adb>adb devices
List of devices attached
192.168.56.101:5555 device

C:\adb>adb reboot
```

```
Genymotion for personal use - Google Nexus 4 - ...
File installation warning
D6-signed.zip seems to be a flashable virtual device?
may corrupt the virtual device.
```

