

HTTP Error 500.19 - Internal Server Error

The requested page cannot be accessed because the related configuration data for the page is invalid.

Detailed Error Information:

Module	IIS Web Core	Requested URL	http://www.edogcol.ru:8085/Gate
Notification	BeginRequest	Physical Path	D:\Gate_Edogcol
Handler	Not yet determined	Logon Method	Not yet determined
Error Code	0x800700b7	Logon User	Not yet determined
Config Error	Не удалось добавить копию ввода коллекции и типа "add" с уникальным ключевым атрибутом "name" со значением "ExtensionlessUrlHandler-Integrated-4.0"		
Config File	\\?\D:\Gate_Edogcol\web.config		

Config Source:

```
117: <add name="ExtensionlessUrlHandler-ISAPI-4.0_64bit" path="*" verb="GET,HEAD,POST,DEBUG,PUT,DELETE,PATCH,OPTIONS" modules="IsapiModule" scriptProcessor="%windir%\Microsoft.NET\Framework64\v4.0.30319\aspnet_isapi.dll" type="System.Web.Handlers.TransferRequestHandler" preCondition="integratedMode,readOnly=false"/>
118: <add name="ExtensionlessUrlHandler-Integrated-4.0" path="*" verb="GET,HEAD,POST,DEBUG,PUT,DELETE,PATCH,OPTIONS" type="System.Web.Handlers.TransferRequestHandler" preCondition="integratedMode,readOnly=false"/>
119: <remov
```

More Information

This error occurs
[View more information](#)

Server Manager

Add Roles and Features Wizard

Installation progress

DESTINATION SERVER
WIN-WEB

- Before You Begin
- Installation Type
- Server Selection
- Server Roles
- Features
- Confirmation
- Results

View installation progress

Feature installation

Installation succeeded on WIN-WEB.

Веб-сервер (IIS)

Веб-сервер

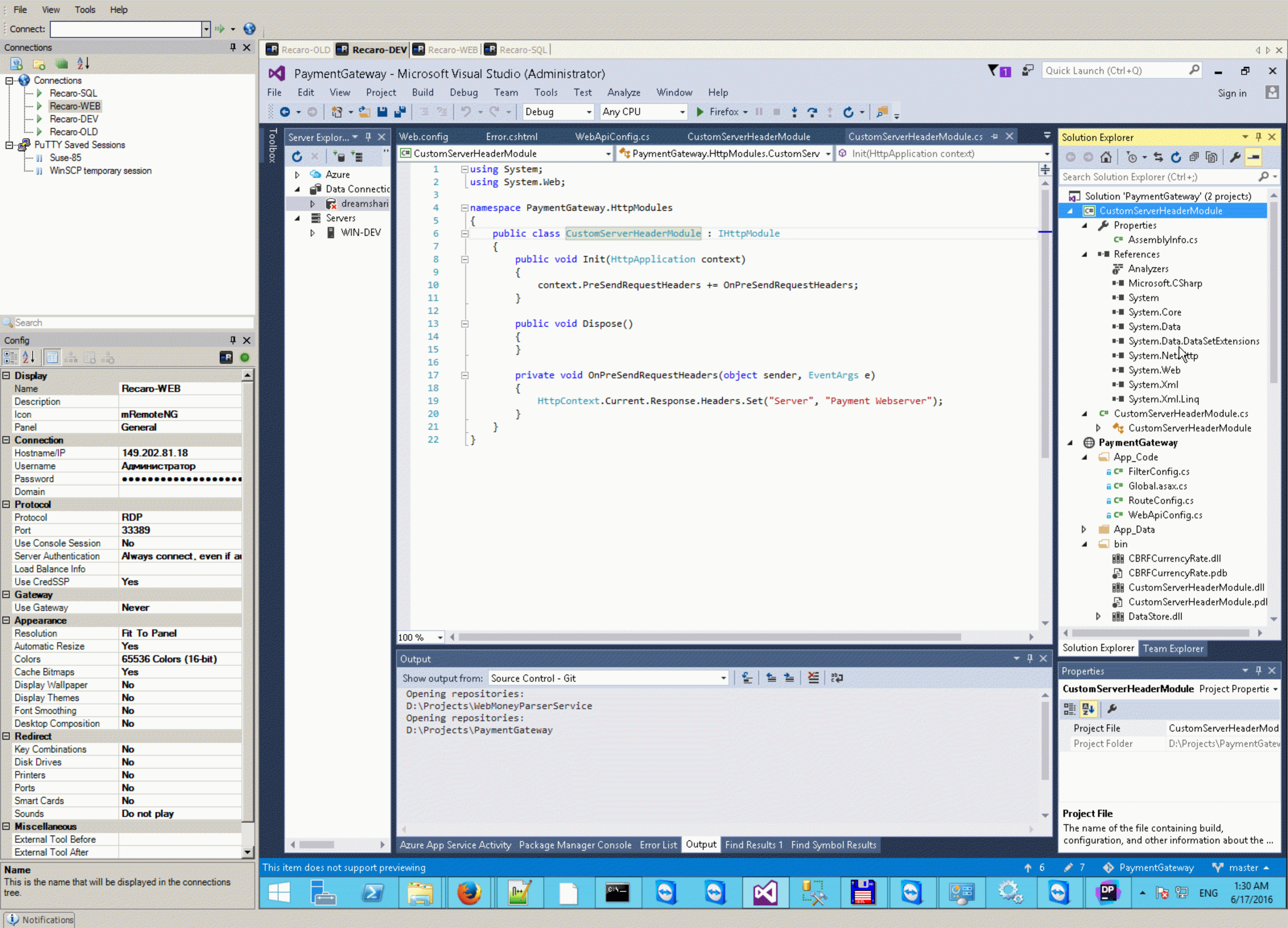
Безопасность

- Обычная проверка подлинности
- Проверка подлинности с сопоставлением сертификата клиента IIS
- Централизованная поддержка SSL-сертификата
- Проверка подлинности с сопоставлением сертификата клиента
- Дайджест-проверка подлинности
- IP-адрес и ограничения домена
- Авторизация URL-адреса
- Проверка подлинности Windows

You can close this wizard without interrupting running tasks. View task progress or open this page again by clicking Notifications in the command bar, and then Task Details.

[Export configuration settings](#)

Name
This is the name that will be displayed in the connections tree.



Connections

- Recaro-SQL
- Recaro-WEB
- Recaro-DEV
- Recaro-OLD

PUTTY Saved Sessions

- Suse-85
- WinSCP temporary session

Display	
Name	Recaro-WEB
Description	
Icon	mRemoteNG
Panel	General

Connection	
Hostname/IP	149.202.81.18
Username	Администратор
Password
Domain	

Protocol	
Protocol	RDP
Port	33389
Use Console Session	No
Server Authentication	Always connect, even if a
Load Balance Info	
Use CredSSP	Yes

Gateway	
Use Gateway	Never

Appearance	
Resolution	Fit To Panel
Automatic Resize	Yes
Colors	65536 Colors (16-bit)
Cache Bitmaps	Yes
Display Wallpaper	No
Display Themes	No
Font Smoothing	No
Desktop Composition	No

Redirect	
Key Combinations	No
Disk Drives	No
Printers	No
Ports	No
Smart Cards	No
Sounds	Do not play

Miscellaneous	
External Tool Before	
External Tool After	

Name
This is the name that will be displayed in the connections tree.

```
1 using System;
2 using System.Web;
3
4 namespace PaymentGateway.HttpModules
5 {
6     public class CustomServerHeaderModule : IHttpModule
7     {
8         public void Init(HttpApplication context)
9         {
10             context.PreSendRequestHeaders += OnPreSendRequestHeaders;
11         }
12
13         public void Dispose()
14         {
15         }
16
17         private void OnPreSendRequestHeaders(object sender, EventArgs e)
18         {
19             HttpContext.Current.Response.Headers.Set("Server", "Payment Webserver");
20         }
21     }
22 }
```

Output

Show output from: Source Control - Git

```
Opening repositories:
D:\Projects\WebMoneyParserService
Opening repositories:
D:\Projects\PaymentGateway
```

Solution Explorer (Ctrl+)

- Solution 'PaymentGateway' (2 projects)
- CustomServerHeaderModule
 - Properties
 - AssemblyInfo.cs
 - References
 - Analyzers
 - Microsoft.CSharp
 - System
 - System.Core
 - System.Data
 - System.Data.DataSetExtensions
 - System.Net.Http
 - System.Web
 - System.Xml
 - System.Xml.Linq
 - CustomServerHeaderModule.cs
 - CustomServerHeaderModule
- PaymentGateway
 - App_Code
 - FilterConfig.cs
 - Global.asax.cs
 - RouteConfig.cs
 - WebApiConfig.cs
 - App_Data
 - bin
 - CBRFCurrencyRate.dll
 - CBRFCurrencyRate.pdb
 - CustomServerHeaderModule.dll
 - CustomServerHeaderModule.pdb
 - DataStore.dll

Properties

CustomServerHeaderModule Project Properties

Project File	CustomServerHeaderMod
Project Folder	D:\Projects\PaymentGatew

Project File

The name of the file containing build, configuration, and other information about the ...

Connections

- Recaro-SQL
- Recaro-WEB
- Recaro-DEV
- Recaro-OLD

PUTTY Saved Sessions

- Suse-85
- WinSCP temporary session

Search

Config

Display

Name	Recaro-WEB
Description	
Icon	mRemoteNG
Panel	General

Connection

Hostname/IP	149.202.81.18
Username	Администратор
Password
Domain	

Protocol

Protocol	RDP
Port	33389
Use Console Session	No
Server Authentication	Always connect, even if a
Load Balance Info	
Use CredSSP	Yes

Gateway

Use Gateway	Never
-------------	-------

Appearance

Resolution	Fit To Panel
Automatic Resize	Yes
Colors	65536 Colors (16-bit)
Cache Bitmaps	Yes
Display Wallpaper	No
Display Themes	No
Font Smoothing	No
Desktop Composition	No

Redirect

Key Combinations	No
Disk Drives	No
Printers	No
Ports	No
Smart Cards	No
Sounds	Do not play

Miscellaneous

External Tool Before	
External Tool After	

Name
This is the name that will be displayed in the connections tree.

File View Navigate Inspect Tools Windows Help

Assembly Explorer

Type to search

- CustomServerHeaderModule (1.0.0.0, msil, .Net Framework v4.5.2)
 - References
 - PaymentGateway.HttpModules
 - CustomServerHeaderModule
 - Base types
 - Dispose():void
 - Init(HttpApplication context):void
 - OnPreSendRequestHeaders(object sender, EventArgs e):void
- mscorlib (4.0.0.0, msil, .Net Framework v4.6.1)
- System.Core (4.0.0.0, msil, .Net Framework v4.6.1)
- System.Data (4.0.0.0, msil, .Net Framework v4.6.1)
- System (4.0.0.0, msil, .Net Framework v4.6.1)
- System.Web (4.0.0.0, msil, .Net Framework v4.6.1)
- System.Xml (4.0.0.0, msil, .Net Framework v4.6.1)

Properties

Assembly

Location	D:\Projects\PaymentGatewayCustomModules\CustomServerHeaderModule1\bin\Debug\CustomServerHeaderModule.o
Name	CustomServerHeaderModule, Version=1.0.0.0, Culture=neutral, PublicKeyToken=null
Platform	.Net Framework v4.5

Namespace

QualifiedName	PaymentGateway.HttpModules
---------------	----------------------------

Connections

- Recaro-SQL
- Recaro-WEB
- Recaro-DEV
- Recaro-OLD

PUTTY Saved Sessions

- Suse-85
- WinSCP temporary session

Search

Config

Display	
Name	Recaro-WEB
Description	
Icon	mRemoteNG
Panel	General
Connection	
Hostname/IP	149.202.81.18
Username	Администратор
Password
Domain	
Protocol	
Protocol	RDP
Port	33389
Use Console Session	No
Server Authentication	Always connect, even if a...
Load Balance Info	
Use CredSSP	Yes
Gateway	
Use Gateway	Never
Appearance	
Resolution	Fit To Panel
Automatic Resize	Yes
Colors	65536 Colors (16-bit)
Cache Bitmaps	Yes
Display Wallpaper	No
Display Themes	No
Font Smoothing	No
Desktop Composition	No
Redirect	
Key Combinations	No
Disk Drives	No
Printers	No
Ports	No
Smart Cards	No
Sounds	Do not play
Miscellaneous	
External Tool Before	
External Tool After	

Name
This is the name that will be displayed in the connections tree.

Recaro-OLD | Recaro-DEV | Recaro-WEB | Recaro-SQL

Не удалось загрузить тип 'Pa... X

edogcol.ru:8085/Gate

Server Error in '/Gate' Application.

Не удалось загрузить тип 'PaymentGateway.HttpModules.CustomServerHeaderModule'.

Description: An unhandled exception occurred during the execution of the current web request. Please review the stack trace for more information about the error and where it originated in the code.

Exception Details: System.Web.HttpException: Не удалось загрузить тип 'PaymentGateway.HttpModules.CustomServerHeaderModule'.

Source Error:

An unhandled exception was generated during the execution of the current web request. Information regarding the origin and location of the exception can be identified using the exception stack trace below.

Stack Trace:

```
[HttpException (0x80004005): Не удалось загрузить тип 'PaymentGateway.HttpModules.CustomServerHeaderModule'.]  
System.Web.Compilation.BuildManager.GetType(String typeName, Boolean throwOnError, Boolean ignoreCase) +433  
System.Web.Configuration.ConfigUtil.GetType(String typeName, String propertyName, ConfigurationElement configElement, XmlNode node, Boolean checkAptcaBit,  
[ConfigurationErrorsException: Не удалось загрузить тип 'PaymentGateway.HttpModules.CustomServerHeaderModule'.]  
System.Web.Configuration.ConfigUtil.GetType(String typeName, String propertyName, ConfigurationElement configElement, XmlNode node, Boolean checkAptcaBit,  
System.Web.Configuration.ConfigUtil.GetType(String typeName, String propertyName, ConfigurationElement configElement, Boolean checkAptcaBit) +33  
System.Web.Configuration.Common.ModulesEntry.SecureGetType(String typeName, String propertyName, ConfigurationElement configElement) +57  
System.Web.Configuration.Common.ModulesEntry..ctor(String name, String typeName, String propertyName, ConfigurationElement configElement) +54  
System.Web.HttpApplication.BuildIntegratedModuleCollection(List`1 moduleList) +198  
System.Web.HttpApplication.GetModuleCollection(IntPtr appContext) +1114  
System.Web.HttpApplication.RegisterEventSubscriptionsWithIIS(IntPtr appContext, HttpContext context, MethodInfo[] handlers) +140  
System.Web.HttpApplication.InitSpecial(HttpApplicationState state, MethodInfo[] handlers, IntPtr appContext, HttpContext context) +172  
System.Web.HttpApplicationFactory.GetSpecialApplicationInstance(IntPtr appContext, HttpContext context) +402  
System.Web.Hosting.PipelineRuntime.InitializeApplication(IntPtr appContext) +343  
[HttpException (0x80004005): Не удалось загрузить тип 'PaymentGateway.HttpModules.CustomServerHeaderModule'.]  
System.Web.HttpRuntime.FirstRequestInit(HttpContext context) +579  
System.Web.HttpRuntime.EnsureFirstRequestInit(HttpContext context) +112  
System.Web.HttpRuntime.ProcessRequestNotificationPrivate(IIS7WorkerRequest wr, HttpContext context) +712
```

Version Information: Microsoft .NET Framework Version:4.0.30319; ASP.NET Version:4.6.1069.1

66 file(s) received successfully X

12. Compile the project.

Deploy the Module

1. Create a new directory under C:\Inetpub\Wwwroot named Module.
2. Create a subdirectory named Bin in the newly created Module directory. The resultant path is C:\Inetpub\Wwwroot\Module\Bin.
3. Copy MyModule.dll from your project's Bin\Debug directory to the C:\Inetpub\Wwwroot\Module\Bin directory.
4. Follow these steps to mark the new Module directory as a Web application:
 - a. Open Internet Services Manager.
 - b. Right-click the Module directory, and then click **Properties**.
 - c. On the **Directory** tab, click **Create**.
 - d. Click **OK** to close the **Module Properties** dialog box.

Configure the System

1. In the C:\Inetpub\Wwwroot\Module\ directory, create a new file named Web.config.
2. Paste the following text in Web.config:

```
<configuration>
  <system.web>
    <httpModules>
      <add name="MyModule" type="MyModule.SyncModule, MyModule" />
    </httpModules>
  </system.web>
</configuration>
```

Test the Module

1. In the C:\Inetpub\Wwwroot\Module directory, create a new .aspx file named Test.aspx.
2. Paste the following text into Test.aspx:

```
<%@Page Language="C#"%>
<% Response.Write("Hello from Test.aspx.<br>"); %>
```

Connect:

Connections

- Recaro-SQL
- Recaro-WEB
- Recaro-DEV
- Recaro-OLD

PUTTY Saved Sessions

- Suse-85
- WinSCP temporary session

Search

Config

Display

Name	Recaro-WEB
Description	
Icon	mRemoteNG
Panel	General

Connection

Hostname/IP	149.202.81.18
Username	Администратор
Password
Domain	

Protocol

Protocol	RDP
Port	33389
Use Console Session	No
Server Authentication	Always connect, even if a...
Load Balance Info	
Use CredSSP	Yes

Gateway

Use Gateway	Never
-------------	-------

Appearance

Resolution	Fit To Panel
Automatic Resize	Yes
Colors	65536 Colors (16-bit)
Cache Bitmaps	Yes
Display Wallpaper	No
Display Themes	No
Font Smoothing	No
Desktop Composition	No

Redirect

Key Combinations	No
Disk Drives	No
Printers	No
Ports	No
Smart Cards	No
Sounds	Do not play

Miscellaneous

External Tool Before	
External Tool After	

Name
This is the name that will be displayed in the connections tree.

Recaro-OLD | Recaro-DEV | **Recaro-WEB** | Recaro-SQL

Internet Information Services (IIS) Manager

WIN-WEB

File View Help

Handler Mappings

Use this feature to specify the resources, such as DLLs and managed code, that handle responses for specific request types.

Group by: State

Name	Path	State	Path Type	Handler	Entry Type
Disabled					
CGI-exe	*.exe	Disabled	File	CgiModule	Local
ISAPI-dll	*.dll	Disabled	File	IsapiModule	Local
Enabled					
ASPCClassic	*.asp	Enabled	File	IsapiModule	Local
aspq-Integrated-4.0		Enabled	File	ForbiddenH...	Local
aspq-ISAPI-4.0_32bit		Enabled	File	ForbiddenH...	Local
aspq-ISAPI-4.0_64bit		Enabled	File	ForbiddenH...	Local
AssemblyResourceLoader-Integra...		Enabled	File	rs.Assem...	Local
AssemblyResourceLoader-Integra...		Enabled	File	rs.Assem...	Local
AXD-ISAPI-2.0		Enabled	File	ForbiddenH...	Local
AXD-ISAPI-2.0-64		Enabled	File	ForbiddenH...	Local
AXD-ISAPI-4.0_32bit		Enabled	File	ForbiddenH...	Local
AXD-ISAPI-4.0_64bit		Enabled	File	ForbiddenH...	Local
cshtml-Integrated-4.0		Enabled	File	ForbiddenH...	Local
cshtml-ISAPI-4.0_32bit		Enabled	File	ForbiddenH...	Local
cshtml-ISAPI-4.0_64bit		Enabled	File	ForbiddenH...	Local
cshtml-Integrated-4.0		Enabled	File	ForbiddenH...	Local
cshtml-ISAPI-4.0_32bit		Enabled	File	ForbiddenH...	Local
cshtml-ISAPI-4.0_64bit		Enabled	File	ForbiddenH...	Local
ExtensionlessUrlHandler-Integra...		Enabled	File	rs.Transfe...	Local
ExtensionlessUrlHandler-ISAPI-4.0...		Enabled	File	rs.Transfe...	Local
ExtensionlessUrlHandler-ISAPI-4.0...		Enabled	File	rs.Transfe...	Local
HttpRemotingHandlerFactory-rem...		Enabled	File	moting.C...	Local
HttpRemotingHandlerFactory-rem...		Enabled	File	moting.C...	Local
HttpRemotingHandlerFactory-rem-IS...	*.rem	Enabled	Unspecified	IsapiModule	Local
HttpRemotingHandlerFactory-rem-IS...	*.rem	Enabled	Unspecified	IsapiModule	Local
HttpRemotingHandlerFactory-rem-IS...	*.rem	Enabled	Unspecified	IsapiModule	Local
HttpRemotingHandlerFactory-rem-IS...	*.rem	Enabled	Unspecified	IsapiModule	Local
HttpRemotingHandlerFactory-soap-In...	*.soap	Enabled	Unspecified	System.Runtime.Remoting.C...	Local
HttpRemotingHandlerFactory-soap-In...	*.soap	Enabled	Unspecified	System.Runtime.Remoting.C...	Local
HttpRemotingHandlerFactory-soap-IS...	*.soap	Enabled	Unspecified	IsapiModule	Local
HttpRemotingHandlerFactory-soap-IS...	*.soap	Enabled	Unspecified	IsapiModule	Local
HttpRemotingHandlerFactory-soap-IS...	*.soap	Enabled	Unspecified	IsapiModule	Local
HttpRemotingHandlerFactory-soap-IS...	*.soap	Enabled	Unspecified	IsapiModule	Local
HttpRemotingHandlerFactory-soap-IS...	*.soap	Enabled	Unspecified	IsapiModule	Local
OPTIONSVerbHandler	*	Enabled	Unspecified	ProtocolSupportModule	Local
PageHandlerFactory-Integrated	*.aspx	Enabled	Unspecified	System.Web.UI.PageHandlerF...	Local

Add Module Mapping

Request path:

Example: *.bas, wsvc.axd

Module:

Executable (optional):

Name:

Request Restrictions...

OK Cancel

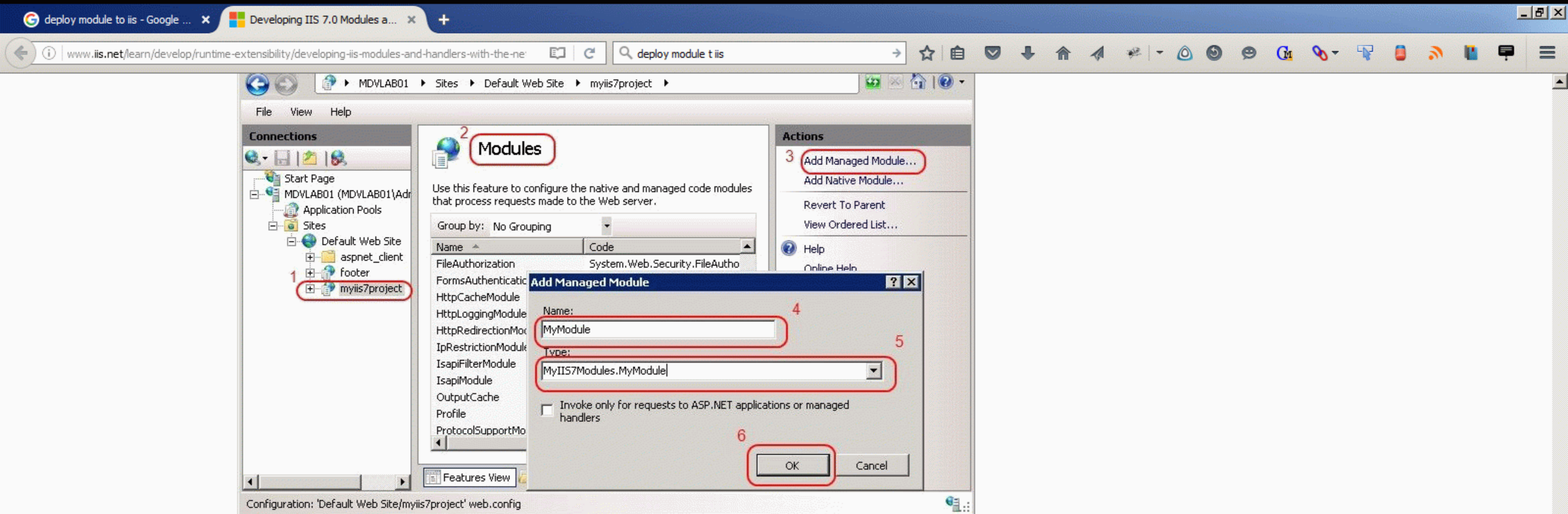
Actions

- Add Managed Handler...
- Add Script Map...
- Add Wildcard Script Map...
- Add Module Mapping...
- Edit Feature Permissions...
- View Ordered List...

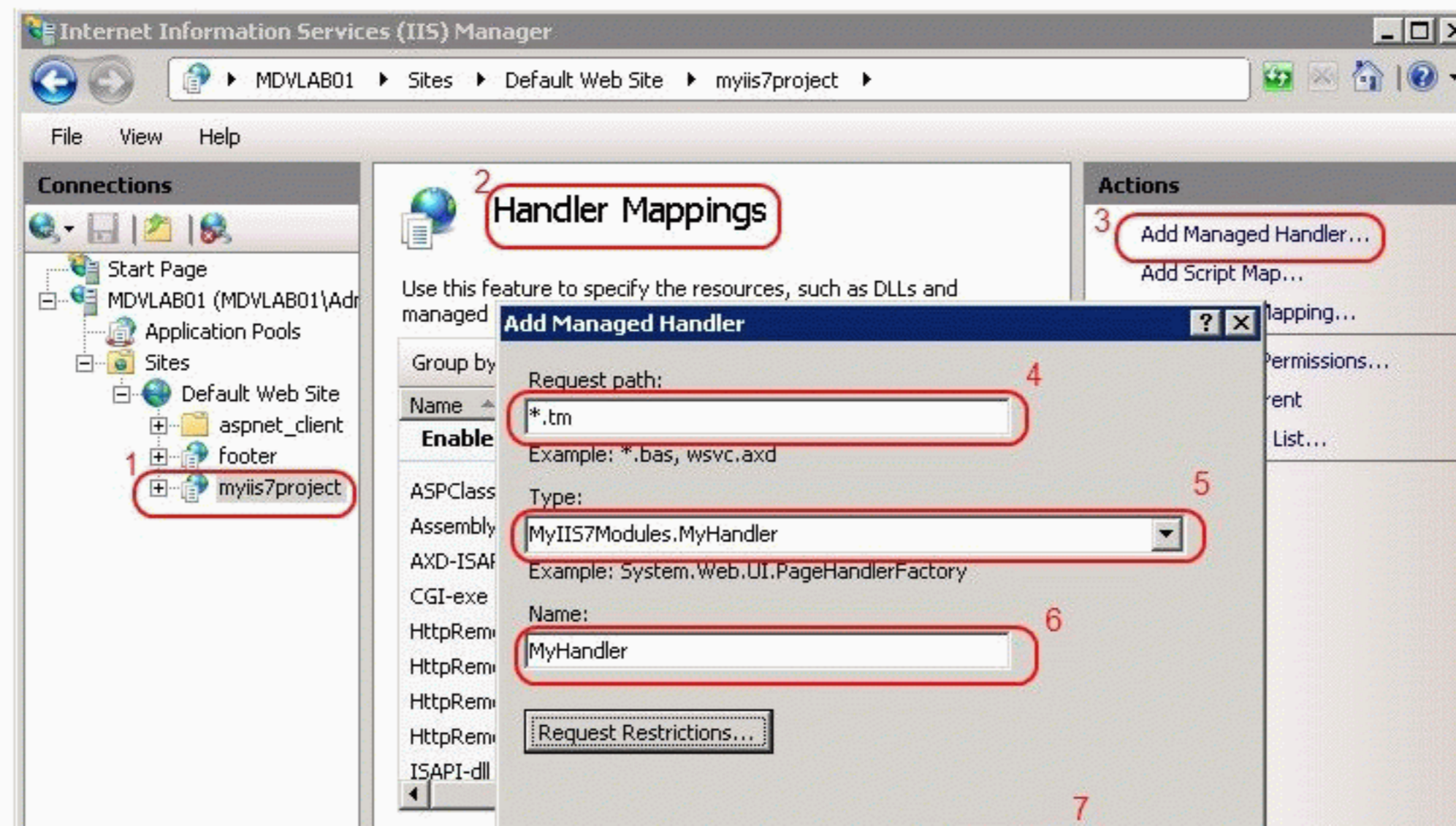
Help

66 file(s) received successfully

Configuration: 'localhost' applicationHost.config



4. Add the handler by double-clicking the site/application node again, and selecting the "**Handler Mappings**" feature icon. Then, click the "Add Managed Handler ..." action, and in the resulting dialog box specify "**time.tm**" for path, "**MyIIS7Modules.MyHandler**" for the type, and "**MyHandler**" for the name (arbitrary). Again, note that the type is present in the dropdown box because the Admin tool automatically detected this type in your assembly. Press OK to add the handler.



▲ After working with this for a bit, I managed to make it work.

4 Installing the assembly in the .net 4.0 GAC will not make it available in the type dropdown in IIS manager under "Add Managed Module".

▼ What I had to do was:

✓ Create the .net 4.0 Class Library, and compile it as a strong named assembly

Install it in the .net 4.0 GAC by using the gacutil, located in Program Files (x86)\Microsoft SDKs\Windows\v7.0A\bin\NETFX 4.0 Tools

(Or make Visual Studio compile, sign and install the assembly automatically)

Add this line under `<modules>` in applicationHost.config: (it has to be done manually, it can't be done in the manager)

```
<add name="MyName" type="NameSpace.ClassName" preCondition="managedHandler, runtimeVersionv4.0" />
```

This makes the module run on requests to sites developed in .net 4.

It appears, however, that requests to sites developed in pre .net 4 versions can't use a module created in .net 4.0. So if you make requests for pages in a site created in .net 3.5, the module will not work.

Another observation:

After you have added the module to IIS via the applicationHost.config file, if you open the IIS manager, highlight the servername in connections and click modules. You will see the .net 4 module on the list.

Double click on it, and you'll then see the settings for it. You'll see that the "Invoke only for requests to ASP.NET applications or managed handlers" checkbox is checked. If you uncheck it, and hit ok, you'll get an error saying that the assembly hasn't been installed in the GAC.

But didn't I just install it successfully in the .net 4 GAC? And didn't I just see the module run in a request?

If you go ahead and save the settings anyway, you get a runtime error, and if you look in applicationHost.config, you'll see that your previously manually added module settings has changed.

But what if I want to "Invoke only for requests to ASP.NET applications or managed handlers?"

share edit

edited Feb 20 '12 at 11:31

answered Feb 20 '12 at 11:24

 Soeren
423 ● 2 ● 14 ● 36

Thanks, Soeren, it was a lot of help reading your question and answers you put here yourself. I have a question about the next steps. How would you put a configuration file for you module? (as it is running with no specific application). I mean, what is the standard way to put some kind of configuration file for such a server-level module? – Bakhshi Feb 14 '13 at 4:56

Hi, your seems useful to me but where is this applicationHost.config file you are talking about... I am also facing a similar issue... – SutharMonil Dec 19 '13 at 4:42

add a comment

▲ You have to add a module at a server level. You can do that from command line:

2 `appcmd add module /name:string /type:string /preCondition:string`

ux why do dialogs have grey backgrounds?

How do I handle fund minimums as a beginning investor?

What may stop a Mars colony from declaring independence to make the project justifiable?

Are the Ninja Gaiden games in the same universe?

Did Pablo Reyes post a Facebook update that predicts the future?

Did Euler prove theorems by example?

Is exFAT FAT64?

The four of us are brothers and sisters. Who are we? And why?

Selecting all strings from database that starts with a lowercase letter

Why didn't Germany blockade the Strait of Gibraltar during WW2?

Rebus puzzle "cancelled"

Connect: [Dropdown]

Connections

- Recaro-SQL
- Recaro-WEB
- Recaro-DEV
- Recaro-OLD

PUTTY Saved Sessions

- Suse-85
- WinSCP temporary session

Search

Config

Display

Name	Recaro-WEB
Description	
Icon	mRemoteNG
Panel	General

Connection

Hostname/IP	149.202.81.18
Username	Администратор
Password
Domain	

Protocol

Protocol	RDP
Port	33389
Use Console Session	No
Server Authentication	Always connect, even if a...
Load Balance Info	
Use CredSSP	Yes

Gateway

Use Gateway	Never
-------------	-------

Appearance

Resolution	Fit To Panel
Automatic Resize	Yes
Colors	65536 Colors (16-bit)
Cache Bitmaps	Yes
Display Wallpaper	No
Display Themes	No
Font Smoothing	No
Desktop Composition	No

Redirect

Key Combinations	No
Disk Drives	No
Printers	No
Ports	No
Smart Cards	No
Sounds	Do not play

Miscellaneous

External Tool Before	
External Tool After	

Name
This is the name that will be displayed in the connections tree.

Internet Information Services (IIS) Manager

WIN-WEB > Sites > edogcol > Gate

File View Help

Connections

- Start Page
- WIN-WEB (WIN-WEB\Администратор)
- Application Pools
- Sites
 - 1srv
 - baby-goods
 - edogcol
 - aspnet_client
 - Gate
 - bin
 - Content
 - Scripts
 - Views
 - radar-detectors
 - satdigital

Modules

Use this feature to configure the native and managed code modules that process requests made to the Web server.

Group by: No Grouping

Name	Code	Module Type	Entry Type
AnonymousAuthenticationModule	%windir%\System32\inetsrv\...	Native	Inherited
AnonymousIdentification	System.Web.Security.Anony...	Managed	Inherited
ApplicationInitializationModule	%windir%\System32\inetsrv\...	Native	Inherited
BasicAuthenticationModule	%windir%\System32\inetsrv\...	Native	Inherited
CertificateMappingAuthentica...	%windir%\System32\inetsrv\...	Native	Inherited
CgiModule	%windir%\System32\inetsrv\...	Native	Inherited
ConfigurationValidationModule	%windir%\System32\inetsrv\...	Native	Inherited
CustomErrorModule	%windir%\System32\inetsrv\l...	Native	Inherited
CustomLoggingModule	%windir%\System32\inetsrv\l...	Native	Inherited
CustomServerHeader	PaymentGateway.HttpModul...	Managed	Local
DefaultAuthentication			
DefaultDocumentModule			
DigestAuthenticationModule			
DirectoryListingModule			
DynamicCompressionModule			
DynamicIpRestrictionModule			
ErrorLog			
FailedRequestsTracingModul			
FastCgiModule			
FileAuthorization			
FormsAuthentication			
HttpCacheModule			
HttpLoggingModule			
HttpRedirectionModule			
IISCertificateMappingAuthenti...	%windir%\System32\inetsrv\...	Native	Inherited
IpRestrictionModule	%windir%\System32\inetsrv\i...	Native	Inherited
IsapiFilterModule	%windir%\System32\inetsrv\af...	Native	Inherited
IsapiModule	%windir%\System32\inetsrv\i...	Native	Inherited
OutputCache	System.Web.Caching.Output...	Managed	Inherited
Profile	System.Web.Profile.ProfileMo...	Managed	Inherited
ProtocolSupportModule	%windir%\System32\inetsrv\...	Native	Inherited
RequestFilteringModule	%windir%\System32\inetsrv\...	Native	Inherited
RoleManager	System.Web.Security.RoleMa...	Managed	Inherited
ScriptModule-4.0	System.Web.Handlers.Script...	Managed	Inherited
ServerSideIncludeModule	%windir%\System32\inetsrv\i...	Native	Inherited
ServiceModel	System.ServiceModel.Activati...	Managed	Inherited
ServiceModel-4.0	System.ServiceModel.Activati...	Managed	Inherited
Session	System.Web.SessionState.Sess...	Managed	Inherited
StaticCompressionModule	%windir%\System32\inetsrv\...	Native	Inherited

Edit Managed Module

Name: CustomServerHeader

Type: PaymentGateway.HttpModules.CustomServerHeaderModule

Invoke only for requests to ASP.NET applications or managed handlers

OK Cancel

Actions

- Add Managed Module...
- Configure Native Modules...
- Edit...
- Remove
- Revert To Parent
- View Ordered List...
- Help

66 file(s) received successfully

Configuration: 'edogcol/Gate' web.config

Features View Content View

